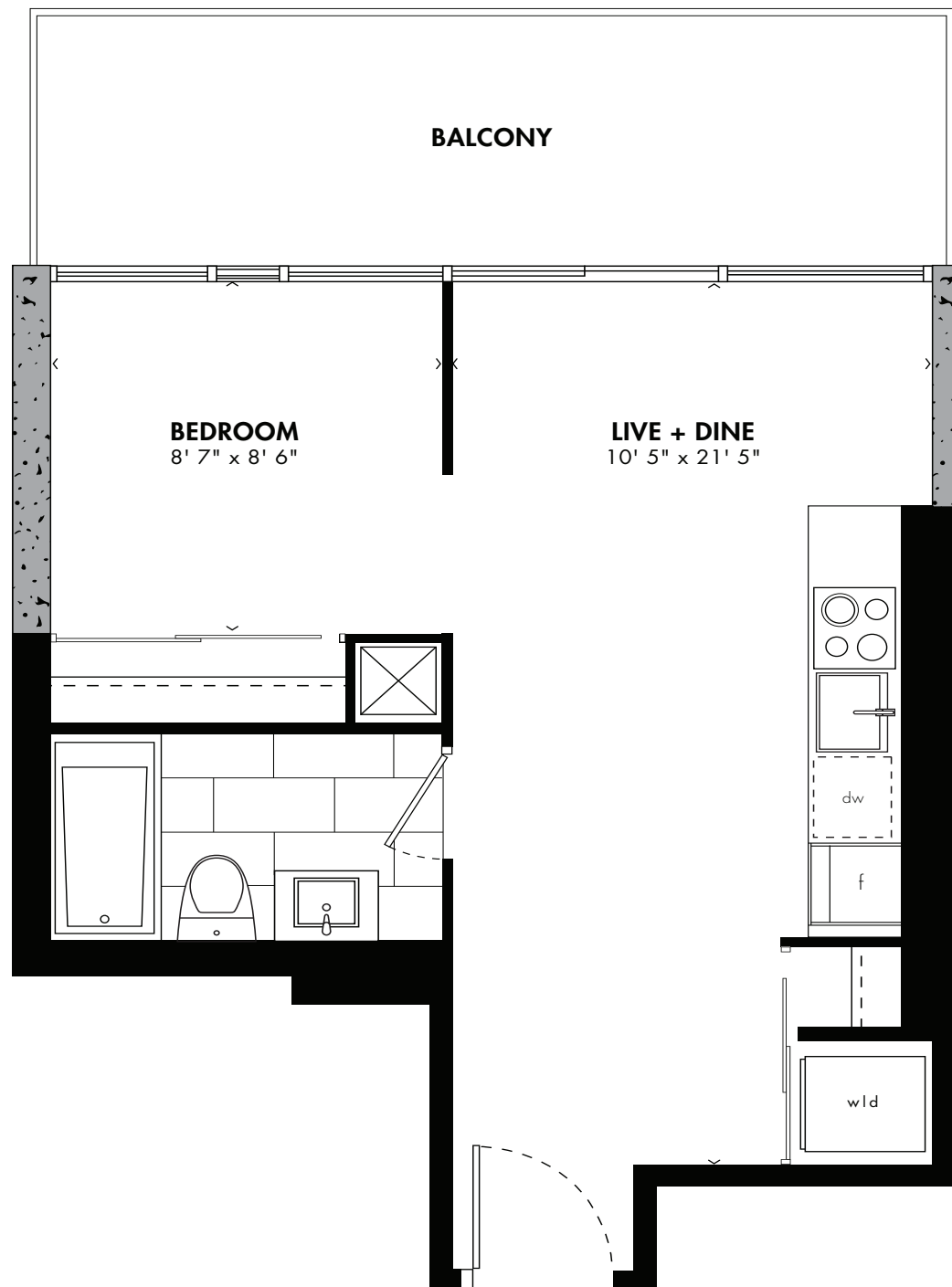


unit 06  
**JR. ONE BEDROOM**  
**427 SQ. FT.**  
 PLUS 118 SQ. FT. EXTERIOR SPACE

# VIENETIANE



**CEILING HEIGHT**  
**FLOORS 10-21: 9'**  
**22<sup>ND</sup> FLOOR: 10'**

Window(s), balcony and balcony door may shift in size and/or location. Actual floor area may differ from stated floor area. All prices, sizes and specifications are subject to change without notice. E. & O.E.



**VENETIANE** From its sleepy tuk-tuk drivers to its cafe society and affordable spas, this former French trading post is languid to say the least. Eminently walkable, the historic old quarter of Vientiane beguiles with tree-lined boulevards crowded with frangipani and tamarind, glittering temples, wandering Buddhist monks and lunging naga (dragon) statues. Meanwhile with most of her old French villas now stylishly reincarnated into restaurants and small hotels, Vientiane is achieving an unprecedented level of panache with a distinctly Gallic flavour.

FLOORS 10-22

RICHMOND STREET EAST

