

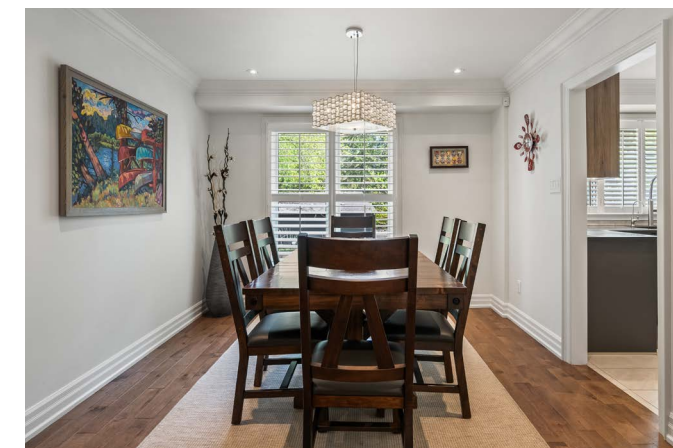


CHRISTENSEN
REAL ESTATE GROUP



MISSISSAUGA

1268 Cermel Drive



Welcome Home



FOR MORE
PHOTOS + DETAILS

Welcome to 1268 Cermel Drive, an exceptional residence nestled at the end of a secluded cul-de-sac in the prestigious Lorne Park neighbourhood. This rare and private setting offers the unique privilege of being the last home on the street, surrounded by mature trees and lush landscaping on a generously sized 70+ foot frontage lot.

Expertly reimagined with a discerning eye, this 4+1 bedroom, 4 bathroom home has been meticulously renovated from top to bottom, showcasing an elevated standard of craftsmanship and design. Step

into expansive, light-filled principal rooms adorned with refined finishes, elegant millwork, and premium materials throughout.

At the heart of the home lies a bespoke chef's kitchen, complete with high-end appliances, a custom eat-in dining area, and direct walk-out to a private deck—perfect for al fresco entertaining. Each bathroom has been transformed into a spa-like retreat, offering serenity and sophistication in equal measure.

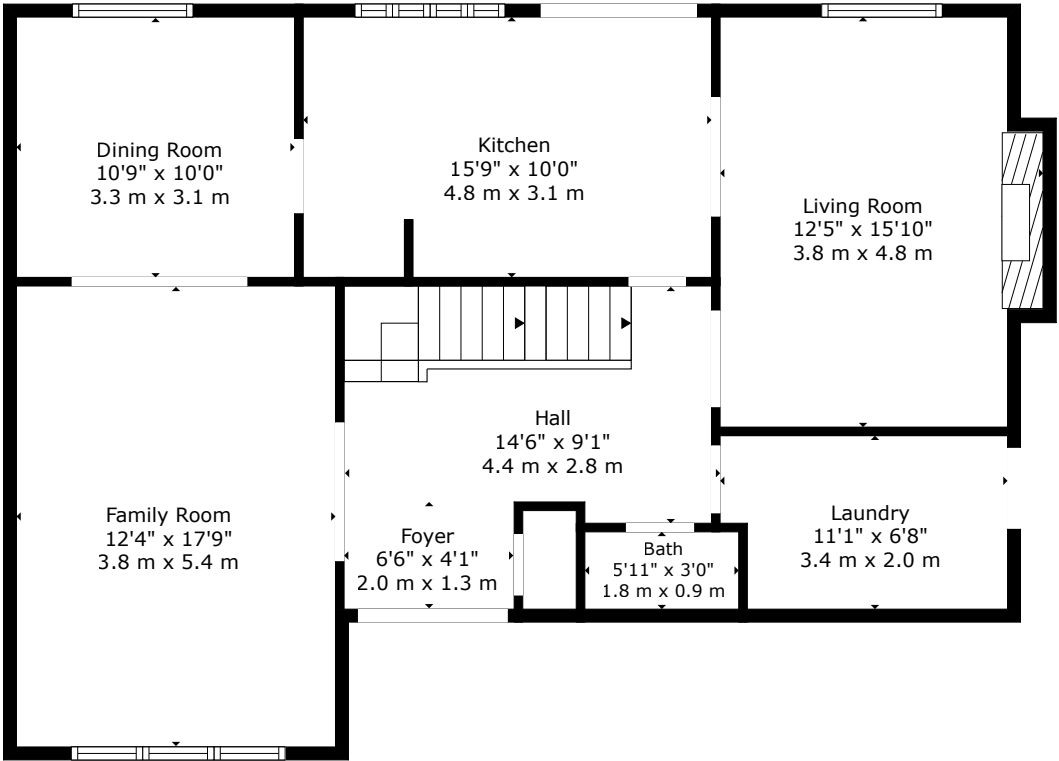
The primary suite is a true sanctuary, featuring a luxurious spa-inspired ensuite and a custom walk-in closet designed with both function and elegance in mind.

The finished lower level offers a spacious and stylish extension of the home, featuring a custom bar with

seating, a wine cellar, and a private bedroom with full bath—ideal for guests or nanny quarters. A walk-out to the backyard and space for a dining area also make it well-suited for multi-generational living.

Step outside to a picturesque and private backyard oasis, where mature landscaping, curated gardens, and soaring trees create a tranquil, retreat-like setting. The natural canopy provides exceptional privacy and a sense of being tucked away in the countryside—offering a rare escape within the city.

Located within the top-ranked Lorne Park school district and just minutes to the lake, parks, trails, shops, and restaurants, this home offers the perfect blend of tranquility and convenience, with quick access to the QEW and GO for easy commuting.



Main Floor

ENTRY/FOYER

- Tile Floor
- Hardwood Floor
- Double Coat Closet
- Designer Light Fixtures
- Pot lights
- Designer Glass Staircase

TWO-PIECE POWDER ROOM

- LIVING ROOM:
- Hardwood Floor
- Window overlooking the front yard
- Crown Molding
- Designer Light Fixture
- Pot-lights

DINING ROOM

- Hardwood Floor
- A window looking out over the backyard
- Designer chandelier
- pot lights

KITCHEN

- Tile floor
- Large Stone Countertop
- Built-In Cabinetry With Ample Storage
- Built-In Wine/Drink Fridge
- Stainless Steel Stove and Cooktop
- Stainless Steel Hood Fan
- Undermount Lighting
- Custom Paneled Fridge
- Custom Paneled Dishwasher
- Undermount Lighting
- Pot Lights

BREAKFAST / EAT-IN AREA

- Tile Floor
- Walkout To The Backyard And Deck
- Designer Chandelier
- Crown Molding
- Pot Lights

FAMILY ROOM

- Hardwood Floor
- Gas Fireplace
- Window Overlooking Backyard
- Designer Chandelier
- Crown Molding
- Pot Lights

MAIN LEVEL LAUNDRY AREA

- Tile Floor
- Matching White Washer and Dryer
- Laundry Sink
- Storage Cabinets
- Side Entrance





Second Floor

PRIMARY BEDROOM

- Hardwood Floor
- Large Window
- Walk-In Closet with Built-In Storage
- Designer light-fixture
- Four-piece Ensuite

SECOND BEDROOM

- Hardwood Floor
- Large Window
- Closet
- Designer Light Fixture

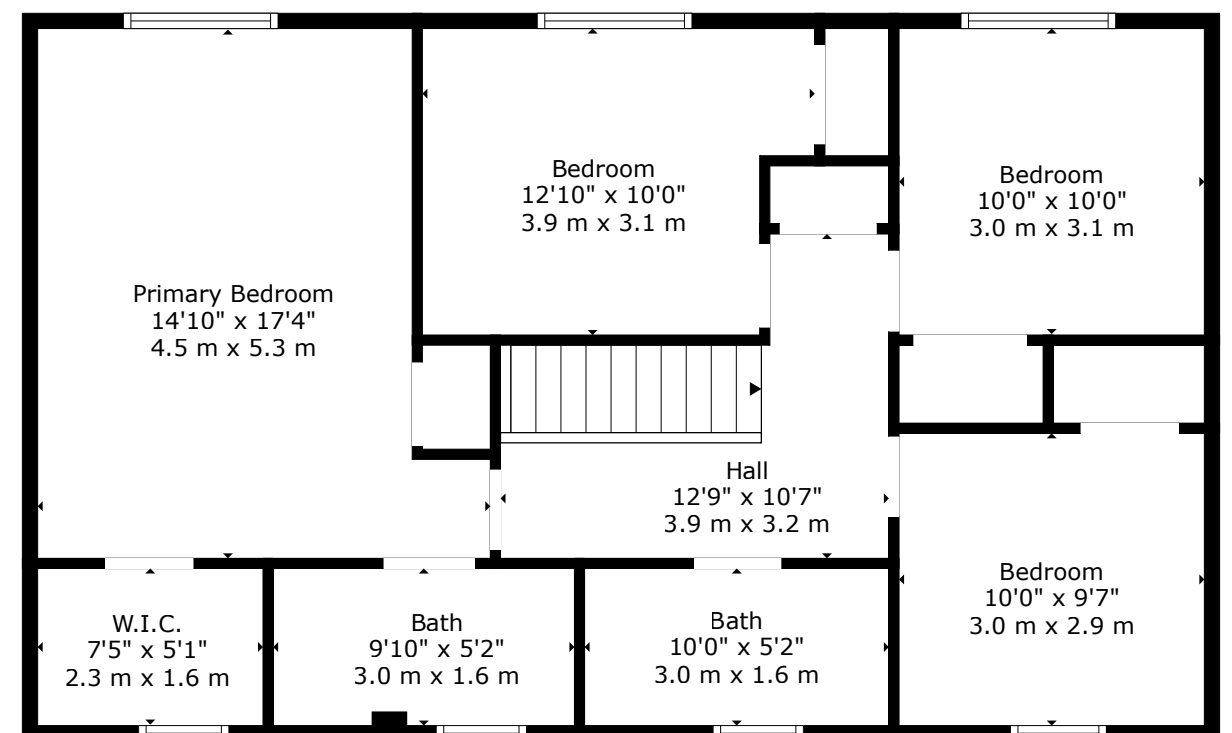
THIRD BEDROOM

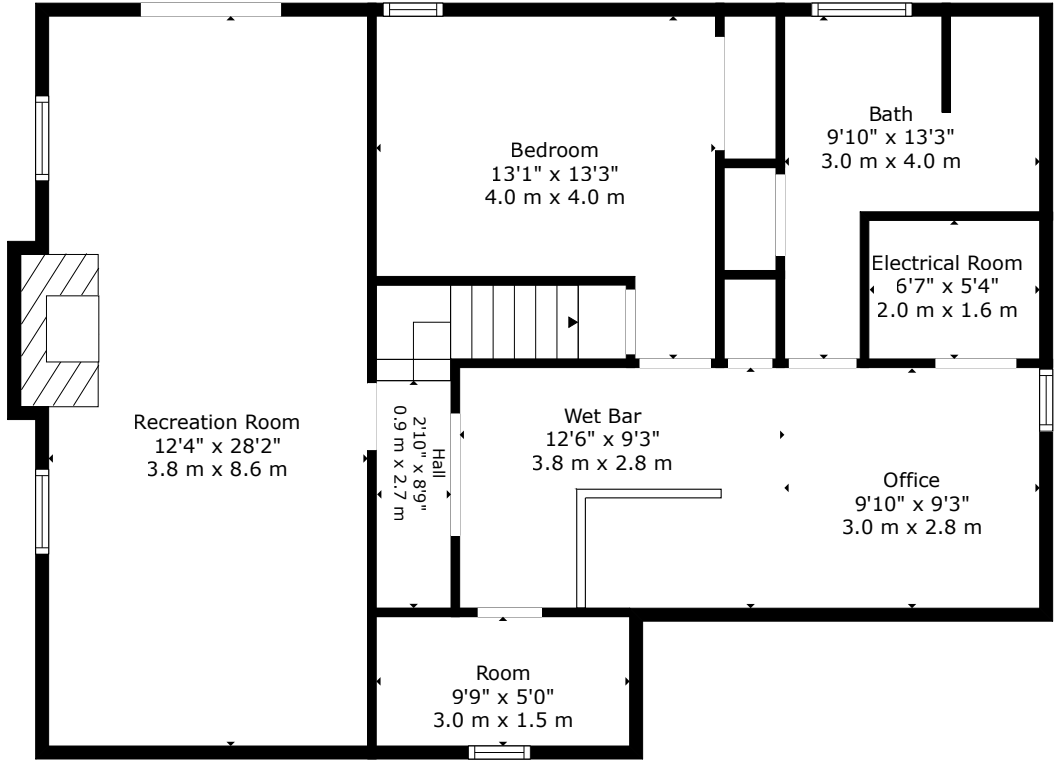
- Hardwood Floor
- Large Window
- Closet
- Designer Light Fixture

FOURTH BEDROOM

- Hardwood Floor
- Large Window
- Closet
- Designer Light Fixture

FOUR-PIECE FAMILY BATH





Lower Level

RECREATION ROOM

- New Flooring
- Above Grade Windows
- Walk out to the backyard
- Pot lights

FIFTH BEDROOM

- New Flooring
- Above Grade Windows
- Pot lights

FOUR-PIECE BATHROOM

BAR

- Custom Bar Counter
- Bar Seating For Six
- Custom Backsplash
- Custom Bar Storage
- Designer Hanging Pendants

WINE CELLAR

- Temperate Controlled Wine Cellar With Tasting Stand





Extras

UPDATES & RENOVATIONS

- Fully renovated in 2016 (top to bottom)
- New drain pipes in the basement are connected to the city lines
- Renovated basement with new flooring, bar, bedroom, and 4-piece bathroom
- Updated kitchen with new counters, tiles, and appliances
- New wood floors, blinds, paint, and hallway tiles on the main floor
- New staircase with glass railings
- New floors in upstairs bedrooms
- Built-in office upstairs

LOT SIZE 70.32 feet wide x 117 feet deep

TAXES \$8141.18 (2024)



CHRISTENSEN
REAL ESTATE GROUP



Ready to Reach Out?

Christensen Real Estate Group
christensengroup.ca

Evan Christensen Broker 416-722-4723
Niels Christensen Broker 416-315-4480



Harvey Kalles Real Estate Ltd., Brokerage
2316 Bloor Street West, Toronto, ON M6S 1P2
This is not intended to solicit buyers or sellers currently under contract.

